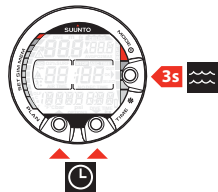


SUUNTO COBRA | SUUNTO VYPER QUICK GUIDE

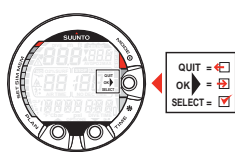


Read complete User Guide on CD or
www.suunto.com/manuals

▶ ACTIVATE



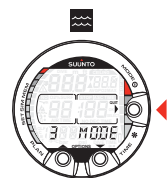
⏸ SELECT / ACCEPT / QUIT



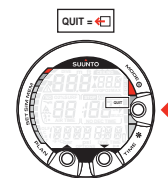
🔍 BROWSE / CHANGE VIEW



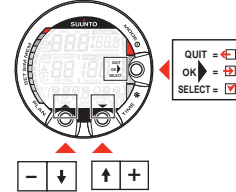
🔧 ENTER SETTINGS



🔧 EXIT SETTINGS



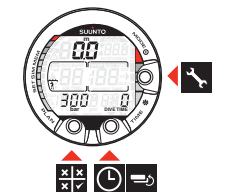
🔧 CHANGE SETTINGS



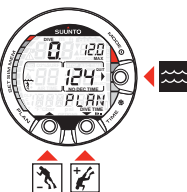
🕒 TIME



🌊 SURFACE



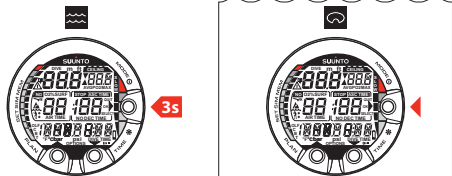
📄 PLAN



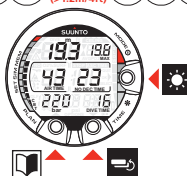
🔧 SETTINGS

MEMORY		SIMUL		SET	
LOGBOOK	1) Dive 1 2) Dive 2 3) Dive n 4) END	page 1 2 n	SIMDIVE dive simul.	asc./desc.	SET DIVE
			SIMPLAN surf. time	+/- h min	1) Adj MODE 2) d ALARM 3) MAX DPTH 4) NITROX
			SIM PLAN	+/- depth	Altitude Personal on/off DT min on/off alarm depth O2% PO2
HISTORY	history				SET TIME
TR - PC	data trans.				1) Adj TIME 2) Adj DATE 3) T ALARM
					24h/12h h min year month day on/off h min
					SET PREF
					1) LIGHT 2) UNITS 3) MODEL
					backlight on time metric imperial air nitrox gauge

☀ BACKLIGHT



🔄 DIVE



📞 SUUNTO HELP DESK

GLOBAL +358-2-284-1160
USA +1-800-543-9124
CANADA (toll-free) +1-800-267-7506

📄 GET MORE

- www.suunto.com/support
- www.suunto.com/register
- www.movescount.com

